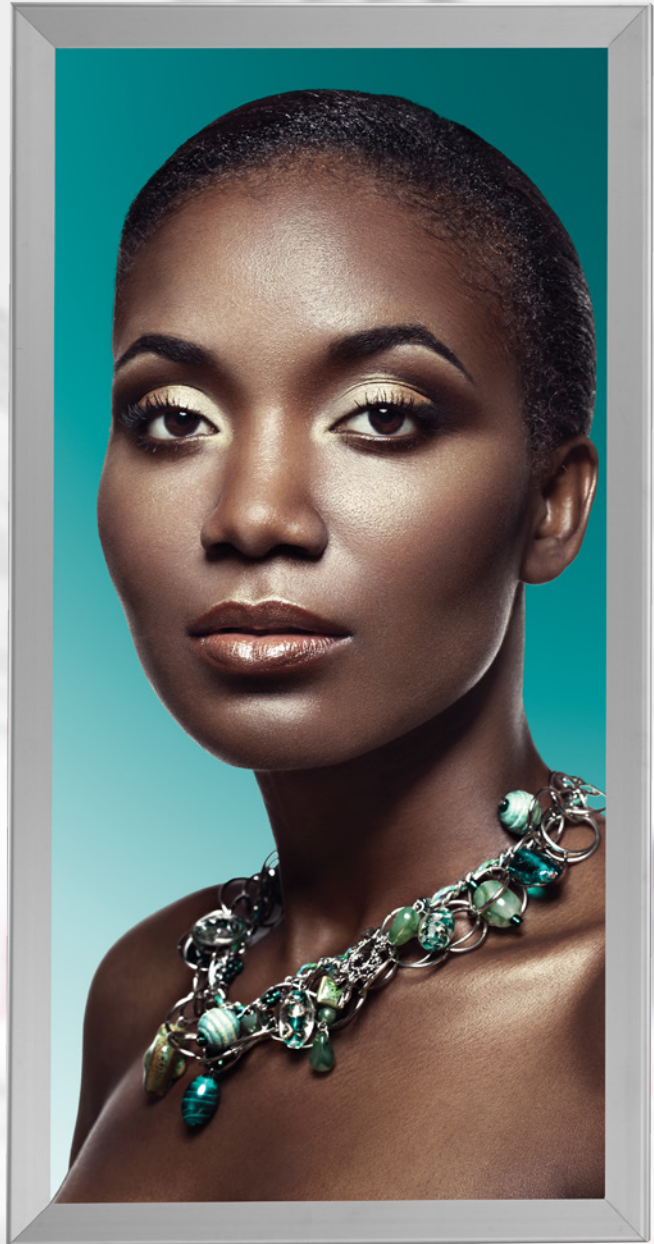


Stretch your imagination—create a world of infinite possibilities.



FabriWare® Soft Signware

makes it easy for designers and visual merchandisers to create a unique, sophisticated environment that attracts attention, engages shoppers and truly expresses your brand.

- Custom fabric display system lends a softer feel to your graphics while delivering maximum visual impact
- Ultra-thin profile draws attention to your message, not the frame
- Choose framed or frameless mounting—both are built into our unique rail system
- Scalable to any size, lightweight design complements any retail environment
- Exclusive FlexEdge™ bead assures easy installation and precise fitment of your soft signage; graphics of any size can be changed in minutes by just one person
- Get the exact sizes you need in days not weeks—no minimum order required
- Superior craftsmanship and outstanding print quality reinforce your brand image
- To ensure perfect fit, we provide both rail hardware and printed graphics; single source supply also saves shipping costs and improves store compliance
- Expert Signware™ Specialist service team assures on-schedule, trouble-free rollouts
- Fabric offers a high quality, environmentally friendly alternative to rigid substrates



Precision-engineered, framed or frameless profile in same rail



Sleek, stylish minimalist design

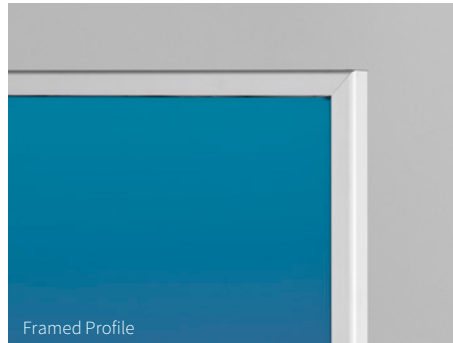
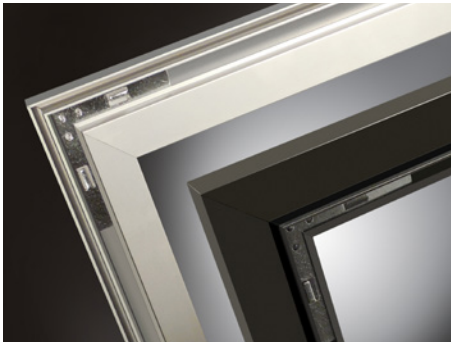


Scalable to any size needed

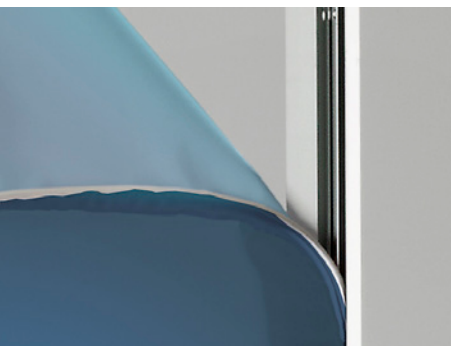


Cost effective alternative for large scale graphics

Space Defining Scalability



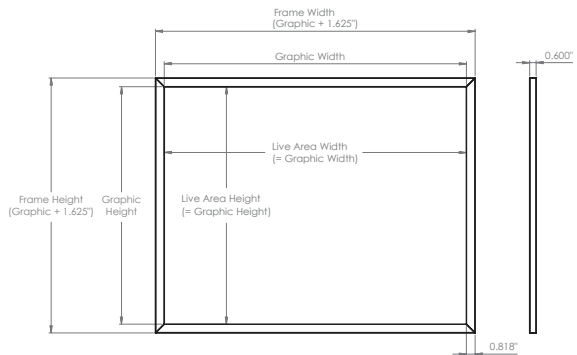
ONE RAIL DESIGN, TWO FRAME PROFILES | Complement any store environment with frameless or framed options built into one patented, precision engineered rail system.



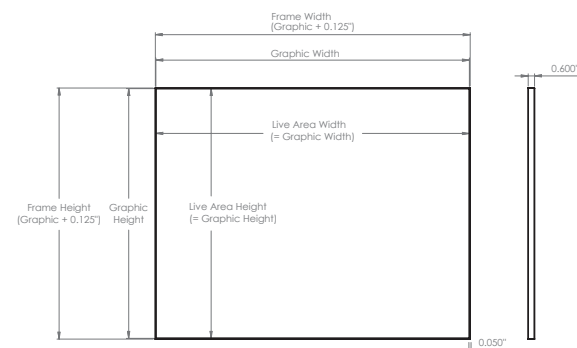
FLEX EDGE BEAD | Exclusive edge bead is easy to install and keeps your graphics 'tight as a drum'!



UNLIMITED SCALABILITY | Large format fitment customized to your exact specifications, please call for details.



FRAMED PROFILE



FRAMELESS PROFILE

ORDERING OPTIONS

Profile

- Framed
- Frameless

Loading

- FlexEdge™ Bead

Visible Graphic Dimensions

Width _____ x Height _____

Orientation

- Portrait
- Landscape

Finish

- Silver (Clear) Anodized Aluminum
- Black Anodized Aluminum
- White Powder Coat
- Custom Color _____

(Custom color minimum quantities and upcharge apply, call for pricing)

Mounting Type

- Wall/surface mount (standard)
- For other mounting scenarios, contact us

Print Process

- Direct to Fabric – Latex
- Digital Dye-sublimation

TECHNICAL INFORMATION | ONE-SIDED PROFILE

SIGNWARE

Depth | 0.6" (15.24 mm)

Profiles | Framed 0.8" (20.23 mm)
Frameless: .050" (1.27mm)

Minimum Frame Size | 8" x 8" (20.3 cm x 20.3 cm)

Maximum Frame Size | Unlimited, oversized murals will be supplied in sections:

- up to 10' graphic | one rail (3048 mm)
- 10' – 20' graphic | two rails, joined at center (3048 mm - 6096 mm)
- Over 20' graphic | 3+ rails, split evenly with connections (6096 mm+)

Mounting | Direct to wall or surface mount, drilled on-site; hardware kit available for desired application. Contact us for more details.

FABRIC GRAPHICS

Substrate

- Dekoflex elastic polyester
- Woven Polyfabric
- Soft knit (recycled)
- Premium Triple White

Fabric with sewn FlexEdge bead.

FlexEdge™ Bead

- Material: Flexible PVC: 0.550" x 0.125"

Purchase Quantity: 200 m roll

Minimum Graphic Size | 8" x 8"
(Live Area: equal to graphic size)

Maximum Graphic Size | 120" x width of roll
(Live Area: equal to graphic size)

*FabriWare® products are protected by U.S. Pat. No. D745,192 and No. 9,343,005

rosedisplays.com

To learn more about FabriWare Soft Signage System, visit rosedisplays.com/solutions/FabriWare or call 800.631.9707

rosedisplays
The Signware® Specialists