

AnoFrame™

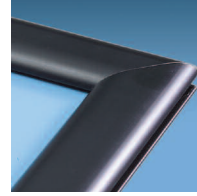
Attractive, versatile and easy-to-use.

- Mount your graphics anywhere — on walls, from ceilings, or in windows.
- Top or side loading for simple graphic changes.
- Available in any size from 5" x 5" to 48" x 96".

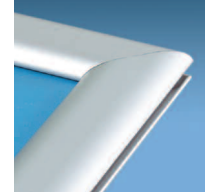
NEW!

Top-loading AnoFrames can now be hung from the ceiling.

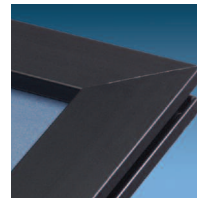
Color Options and Profiles



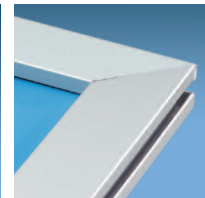
12AF100R
black anodized
aluminum
round profile



12AF100R
clear anodized
aluminum
round profile



12AF100SQ
black anodized
aluminum
square profile



12AF100SQ
clear anodized
aluminum
square profile

Always cut to your exact specifications.



*Bases only work with round profile frames.



97-0475
AnoFrame Center Base
Light grey or black



97-0476
AnoFrame Shovel Base
Light grey or black

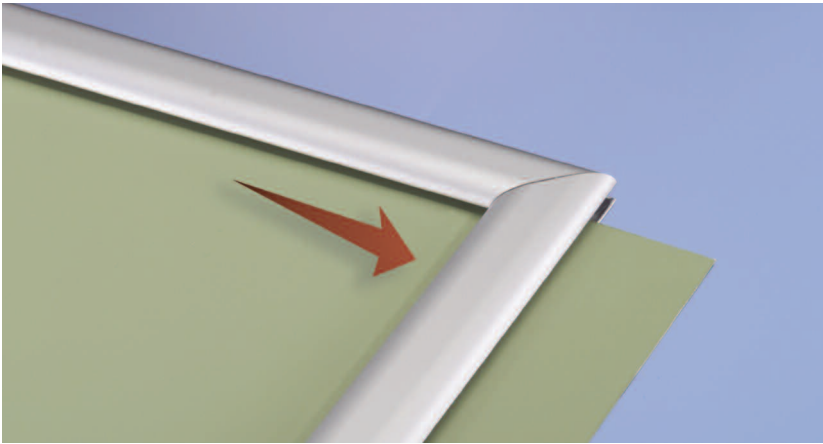
Substrate Possibilities

Substrates should be rigid or semi-rigid.
For thin, flexible substrates use backer boards or clear protective liners.
Sold separately, please call for details

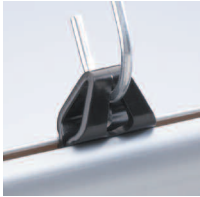
	inches	millimeters	points
maximum thickness equivalent to: 3.5" floppy disk	1/8"	3 mm.	125 pt.

Sizes reflect combined laminate and substrate thickness.

Once assembled, graphics slide in and out with ease.



AnoFrame Accessories



1UP-0101
MultiClip
Black or clear



06-5050
Cable Clip
Black or clear



20-0038
Window Mounts
Clear with black
or clear cap



06-SC150H
Suction Cup
Clear with nickel
plated steel hook

Suction cups are not recommended for use with heavier AnoFrame installations. Call for recommendations.



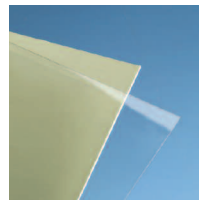
06-6067
Wall Mounting Hanger
Galvanized steel. 1 screw
and 2 nails are included
for mounting flexibility.



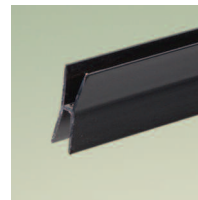
06-6069
Bottom Wall Mounting
Hanger Galvanized steel.
1 screw and 2 nails are
included for mounting
flexibility



06-6068
Slatwall Hanger
Galvanized steel



12-0306
.030 PETG Liner Clear
8.5" x 11"
22" x 28"
36" x 48"
Other sizes available.
Call for pricing.



12H100-B
Panel Divider
Black



97-0471
Off-the-Wall Bracket
Black, clear or champagne
anodized aluminum



06-5045
QuickClip
Black, silver or clear

Pole length: 3" to 12"
Call for Pricing.

AnoFrame Example 12AF100

Example Graphic Size

Miter Cut **Top-Load**

8 1/2" x 11"

22" x 28"

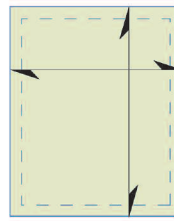
24" x 36"

* Pricing is for top-loading frames. Call for side-loading frames.

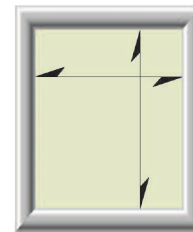
All AnoFrame orders are cut to your exact specifications. For other sizes, call for pricing.

Live Area Calculator 12AF100

Live area is the amount of graphic actually shown when placed in a frame.



Graphic
8.5" x 11"



Live Area
7.25" x 9.75"

When you put a graphic into an AnoFrame, a 5/8" margin is covered by the frame.

Technical Information

Substrates should be rigid or semi-rigid.

Graphic size: Minimum 5" x 5"; Maximum 48" x 96".

Stock finishes are black, clear and champagne anodized aluminum. Custom colors also available; 10,000ft. minimum and an up charge may apply. Wood finishes are available and we can match most colors. Minimum quantities apply. Call for pricing.

Backer boards and protective liners sold separately. Call for details.

Center base intended for mid-shelf use. Shovel base intended for shelf facing.

Assembly required. We can assemble for an additional fee.

1-800-631-9707