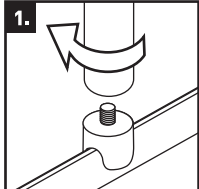


Rose Knows

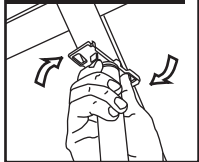
AnoFrame SwivelMount™ assembly

with Various Bases

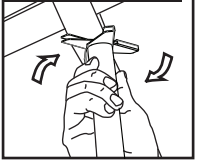
Steps



For ceiling anchor

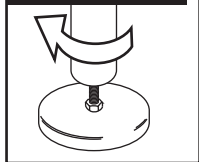


For scissor anchor*

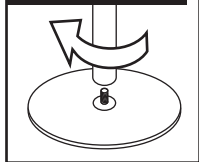


*Twist scissor clip to loosen, attach to grid, and twist to tighten.

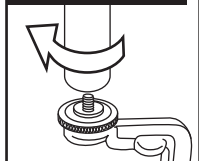
For magnetic base



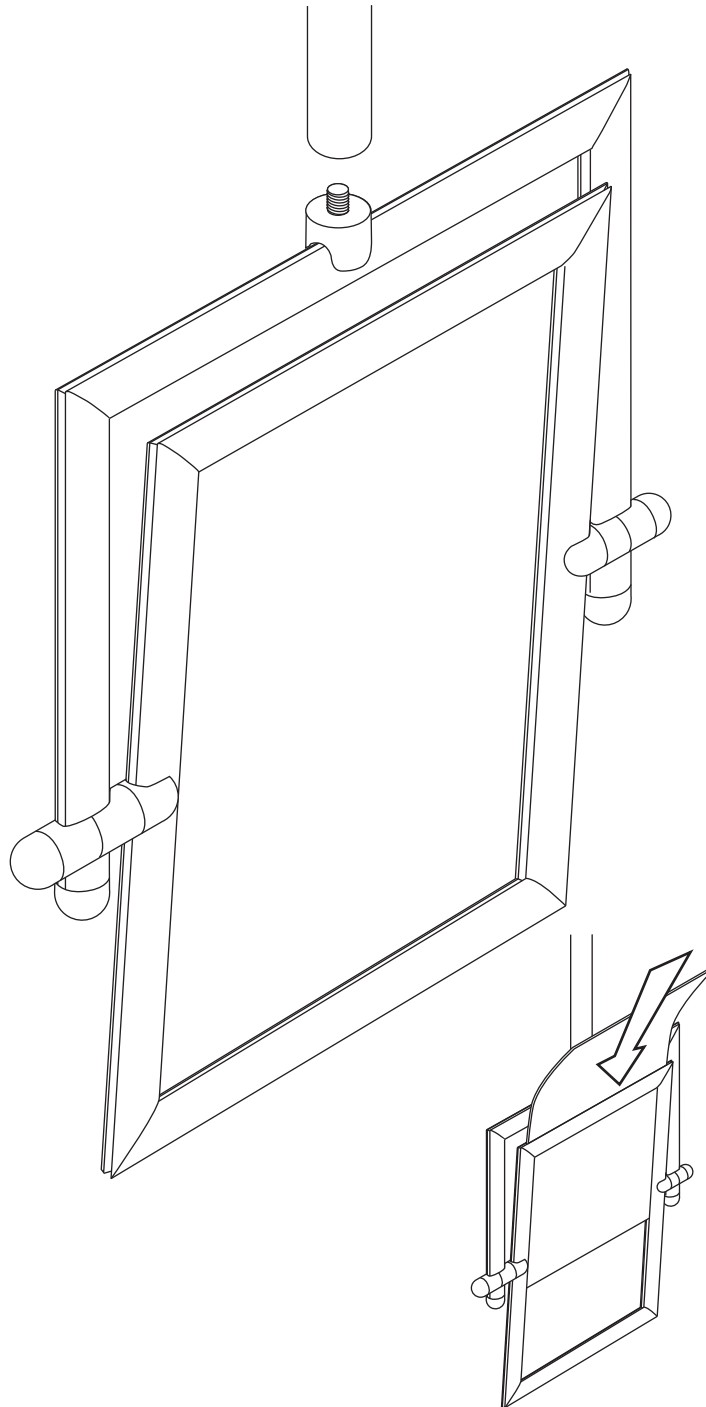
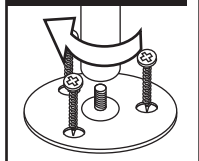
For weighted base



For clamp base

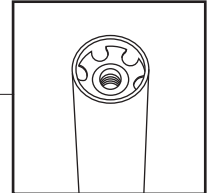


For screw base



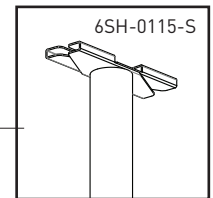
Parts

3", 6" or 36"
Pole



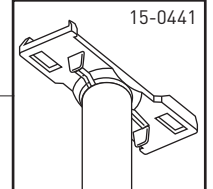
Ceiling
Scissor Anchor

6SH-0115-S



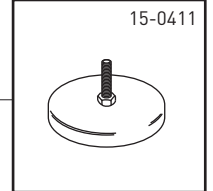
Ceiling
Anchor

15-0441



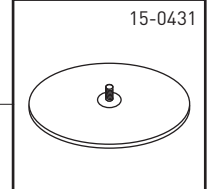
Magnetic
Base

15-0411



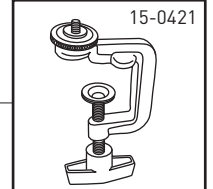
Weighted
Base

15-0431



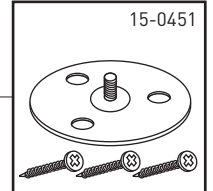
Clamp Base

15-0421



Screw Base

15-0451



Ano™ and the Ano™ family of marks, including the mark AnoFrame SwivelMount™, are trademarks of Rose Displays, Ltd. All rights reserved. Neither the manufacturer nor any sales agent may be held liable for injury, loss or damage resulting from the use of these products.
Part #04INSAnoFrameSwivelMount

rose displays
The Signware Specialists

35 Congress Street Salem, MA 01970 • Tel# 1-800-631-9707 • Fax# 1-800-560-2890
Int'l Tel# 1-978-825-0020 • Int'l Fax# 1-978-825-0096 • e-mail: signware@rosedisplay.com